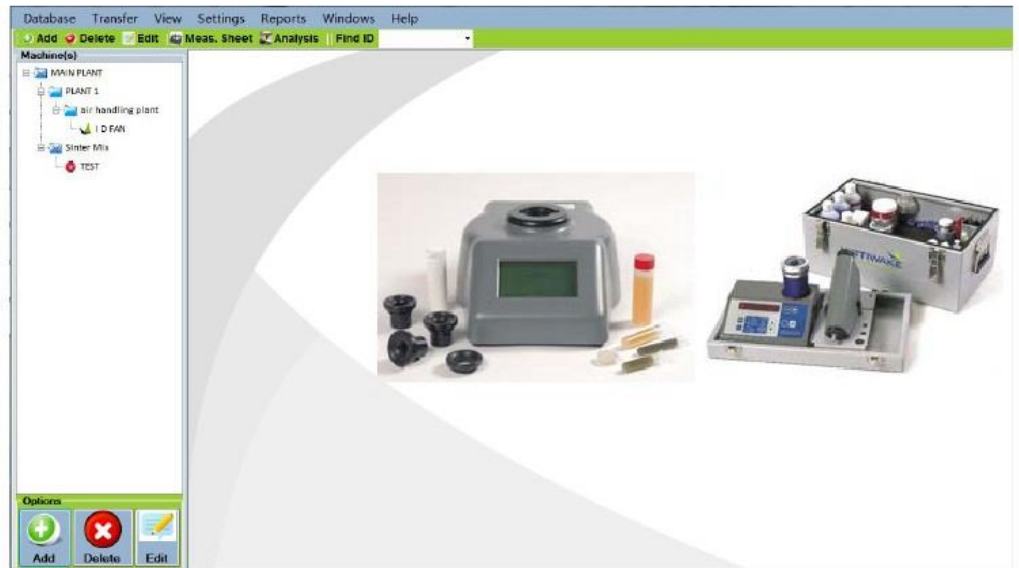




KITTIWAKE

monitoring innovation



KITTIWAKE *lub*MONITOR[®]

ANALEX *fe*MONITOR[®]

A common software that will upload the data from OTC,fdM and fdM+

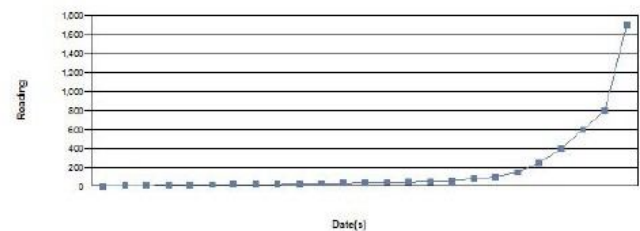
Features:

- Easy to view and set up hierarchical format : Plant – Area – Machines.
- For OTC, fdM+ and fdM:
 - data management
 - monitoring trends
 - alarm setting of various measured parameters
 - graphical representation of the measured parameters for diagnosis (comparison of upto 2 machines)
- Tabular as well as graphical reports
- Email the reports directly through the software via Outlook Express.
- Ways of transferring the data:
 - Transfer the data from OTC, fdM+ and fdM.
 - From file
 - Manual data entry
- Very useful to compare various parameters from the similar machines for diagnosis.



Overview:

- Access provided through license according to the customer's requirement.
- Upgradable on payment of the required license fee.
- Works on Windows (32 & 64 bit) OS from Win2000 onwards including Windows 7 & 8.
- Full functional demo version available FOC for 30 days.
- User friendly design.



Versions:

Available in three variants:

- **KITTIWAKE lubMONITOR®** : For Oil Test Centre (OTC)
- **ANALEX feMONITOR®** : For fdM or fdM+
- **KITTIWAKE lubMONITOR® & ANALEX feMONITOR®** : Combined software for fdM/fdM+ and OTC

For sales and support, please contact
sales@kittiwakeproactive.com

Kittiwake Proactive Technologies Pvt. Ltd.
405 Ansals Majestic Tower 17
Block G-1, Vikas Puri Community Centre
New Delhi – 110 018 India
Tel/fax +91 11 4158 6692, 2854 4364
E-mail : sales@kittiwakeproactive.com
Web: www.kittiwakeproactive.com

Kittiwake Asia Pacific
E-8-6 Block e Megan Avenue 1
189 Tun Razak Kuala Lumpur
50400 Malaysia
Tel: +60 (3) 2333 8906
Email: zainudiny@kittiwake.com
Web: www.kittiwake.com

Kittiwake Americas
4651 Woodstock Rd. Suits 208-214
Roswell, GA 30075
Tel: +1 (678) 905-5630
Email: keithm@kittiwake.com
Web: www.kittiwake-americas.com


Kittiwake Developments Ltd
3-6 Thorgate Road Littlehampton
West Sussex BN17 7LU
United Kingdom
Tel: +44 (0) 1903 731470
Email: sales@kittiwake.com
Web: www.kittiwake.com

Kittiwake GmbH
Marie-Curie-Str.5
25337 Elmshorn Germany
Tel: +49 (4121)463948
Email: info@kittiwake.de
Web: www.kittiwake.de

